

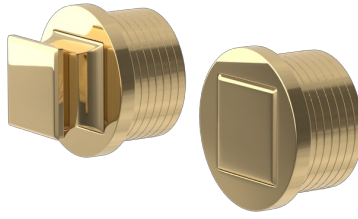


TECHNICAL SPECIFICATIONS

S3048-PU LATCHING HANDLE
SQUARE ON ROUND SOLID IN POLISHED BRASS



POLISHED BRASS (PU)



Latch sold separately

36^{mm} length (l) | 3^{mm} projection (p) | 36^{mm} max grip width (w)

Dimensional Tolerance +/- 1.5^{mm}

NOT TO SCALE

OTHER FINISH OPTIONS



BRIGHT CHROME BC

SATIN NICKEL SN

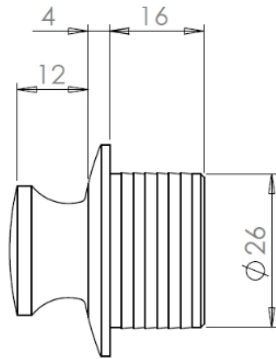
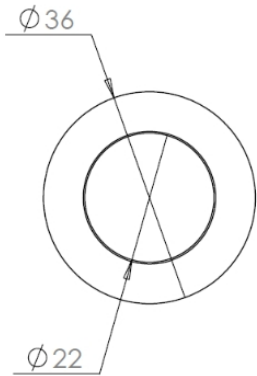
POLISHED NICKEL PN

POLISHED BRASS PU

FINE ANTIQUE BRASS FA

VINTAGE NICKEL VN

VINTAGE PATINA VP



Recommended latch PLK0210
contact sales for details

